



**Calhoun: The NPS Institutional Archive**  
**DSpace Repository**

---

Remote Sensing Center

Remote Sensing Center Publications

---

2014-05-29

## Project Sheet: Brown Out Algorithm

---

<http://hdl.handle.net/10945/41902>

---

This publication is a work of the U.S. Government as defined in Title 17, United States Code, Section 101. Copyright protection is not available for this work in the United States.

*Downloaded from NPS Archive: Calhoun*



Calhoun is the Naval Postgraduate School's public access digital repository for research materials and institutional publications created by the NPS community. Calhoun is named for Professor of Mathematics Guy K. Calhoun, NPS's first appointed -- and published -- scholarly author.

**Dudley Knox Library / Naval Postgraduate School**  
**411 Dyer Road / 1 University Circle**  
**Monterey, California USA 93943**

<http://www.nps.edu/library>

### Helicopter Brown-Out Algorithm

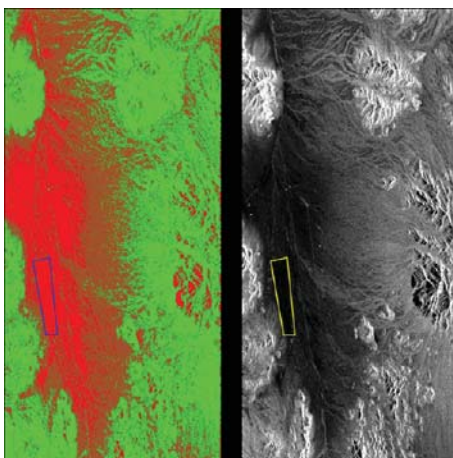


Helicopter Brown-Out costs the US approximately \$100 M per year in casualties/fatalities and significant hardware and field equipment loss.

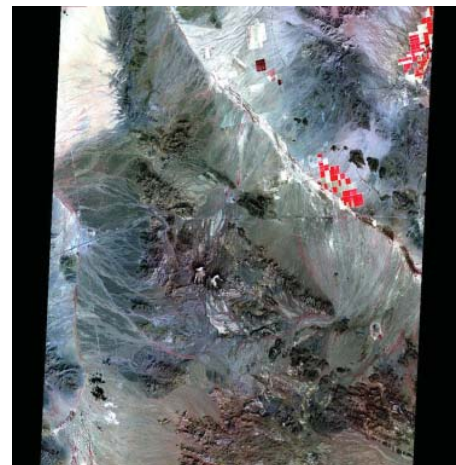
Using National Technical Means and other civil RS systems, various capabilities are being exploited showing that RS data, instruments and analysis techniques can be used not only for mitigation but also to predict and avoid brown-out conditions.



Polarimetric Synthetic Aperture Radar (SAR) data from RADARSAT-2 is analyzed for detection of soils susceptible to helicopter brown-out. Helicopter brown-out occurs when downwash disturbs the dust and sand beneath the aircraft during takeoff, landing, and low altitude operations. Brown-out may lead to pilot spatial disorientation and loss of control, causing helicopter damage or destruction, as well as personnel injury or death. The likelihood of helicopter brown-out is related to soil moisture content, particle size distribution, and surface texture.



This research explores the polarimetric signatures of soils, and determines if these characteristics can be used to predict areas that are susceptible to helicopter brown-out. Preliminary results show that helicopter brown-out regions can be predicted by means of a simple threshold.



Brown-out areas:  
Red= Brownout likely;  
Sienna= Unknown/Ambiguous;  
Green= Non-Brown-out

RADARSAT-2 Image of  
brownout study area at Yuma  
Proving Grounds, AZ

For Further Information Contact:  
Remote Sensing Center  
Naval Postgraduate School  
remotesensing@nps.edu

BECAUSE THE WORLD IS WATCHING

