



Calhoun: The NPS Institutional Archive
DSpace Repository

Department of Defense Analysis

Selected Student Publications

2017-11

Strategic and Operational Structure against irregular threats

Odera, Douglas; Skeen, Tyler; Lynch, Alden

<http://hdl.handle.net/10945/56553>

This publication is a work of the U.S. Government as defined in Title 17, United States Code, Section 101. Copyright protection is not available for this work in the United States.

Downloaded from NPS Archive: Calhoun



Calhoun is the Naval Postgraduate School's public access digital repository for research materials and institutional publications created by the NPS community. Calhoun is named for Professor of Mathematics Guy K. Calhoun, NPS's first appointed -- and published -- scholarly author.

Dudley Knox Library / Naval Postgraduate School
411 Dyer Road / 1 University Circle
Monterey, California USA 93943

<http://www.nps.edu/library>

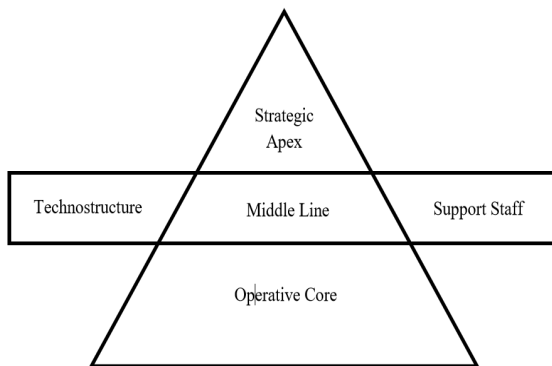
Strategic and Operational Structure against irregular threats:



Naval
Postgraduate
School

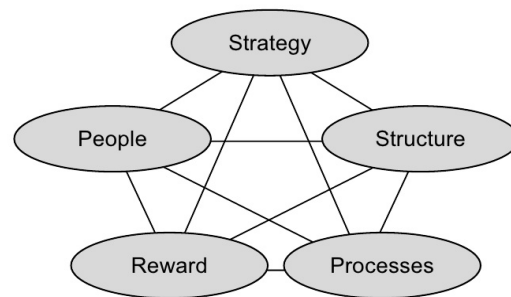
Background, Question, Argument

- Who should take the lead in the unstable and complex environment?
- Is a Conventional Force leadership structure versus a SOF Command and Control (C2) structure appropriate for future irregular conflicts?
- The thesis is important to highlight economy of effort IAW JP 3-05.
- Based on an unstable and complex environment SOF is best suited to take the lead in order to solve our current problems being an inherently an AD hoc organization.



Mintzberg Dimensions of organization

The Star Model (Galbraith, 2002)



Galbraith, J. Designing Organizations, San Francisco; Jossey-Bass, 2002

Research design

- Based on Mintzberg Organizational design theory, Special Operation Forces are the best suited units to command and control (C2) and coordinate efforts to thwart threats in a complex and unstable environment that we face today
- Method/approach
Case studies: Special Action Force (SAF), Village Stability Operations (VSO), and Task Force Viking

Results

- Using organizational design and doctrine, Special Operational Forces are being misused or misallocated.
- The hypotheses is supported by personal experiences, doctrine and case studies

“So What”

- Leverage SOF leadership in unstable and complex environment at the onset of irregular conflicts.

Next Steps

- Determining the “hand off” to Conventional Forcers based on the status of the environment/battlefield

Thesis authors: CPT Douglas Odera, CPT Tyler Skeen, MAJ Alden Lynch
Thesis advisors: Dr. Douglas Borer, Dr. Siamak Naficy