



**Calhoun: The NPS Institutional Archive**  
**DSpace Repository**

---

History of Naval Postgraduate School

Naval Postgraduate School Historical Highlights

---

2014-10

# Naval Postgraduate School Historical Highlights (Ferdinand Burgdorff's fresco: The Witch Tree)

Sanders, John

Monterey, California: Naval Postgraduate School.

---

<https://hdl.handle.net/10945/59047>

---

This publication is a work of the U.S. Government as defined in Title 17, United States Code, Section 101. Copyright protection is not available for this work in the United States.

*Downloaded from NPS Archive: Calhoun*

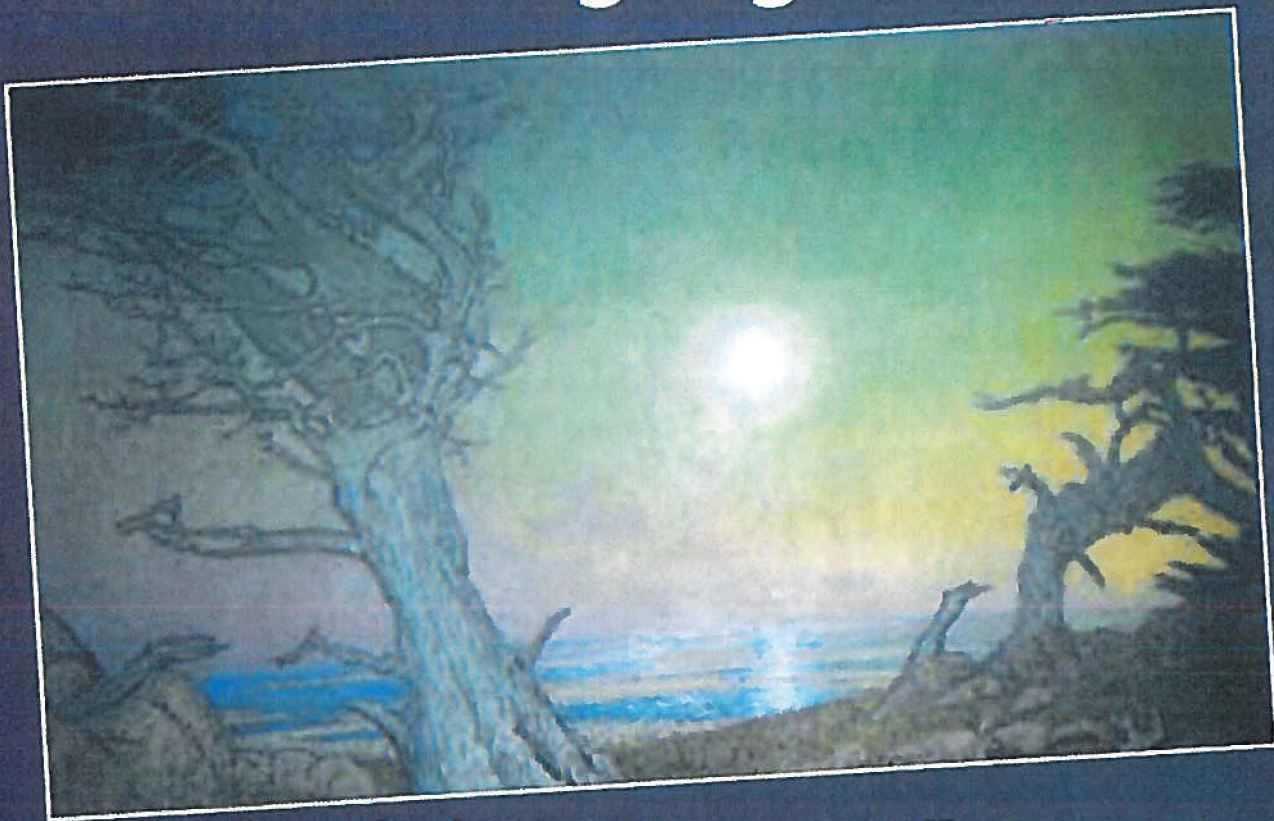


Calhoun is the Naval Postgraduate School's public access digital repository for research materials and institutional publications created by the NPS community. Calhoun is named for Professor of Mathematics Guy K. Calhoun, NPS's first appointed -- and published -- scholarly author.

**Dudley Knox Library / Naval Postgraduate School**  
**411 Dyer Road / 1 University Circle**  
**Monterey, California USA 93943**

<http://www.nps.edu/library>

# Historical Highlights



The fresco in Herrmann Hall's Tower Room captures the beguiling shape of a Monterey Black Cypress called The Witch Tree at Pescadero Point on the 17-Mile Drive. Painted by Ferdinand Burgdorff, the tree is part of a small grove of native cypress trees – some as old as 300 years – that includes the Ghost Tree and Lone Cypress. The Witch Tree was severely damaged by a storm 50 years ago. A small portion of the tree survived but visitors today only see a long, thin, lonesome trunk with two barren branches stretching skyward. Burgdorff's masterful fresco provides a haunting reminder of the tree's former beauty.

*Historical Highlights are provided by the Dudley Knox Library.*