



**Calhoun: The NPS Institutional Archive**  
**DSpace Repository**

---

Faculty and Researchers

Faculty and Researchers' Publications

---

2001-09-30

# Near-Surface Atmosphere and Surface Wave Influences on Rf/EO Propagation Over the Sea

Davidson, Kenneth L.

---

<http://hdl.handle.net/10945/59083>

---

This publication is a work of the U.S. Government as defined in Title 17, United States Code, Section 101. Copyright protection is not available for this work in the United States.

*Downloaded from NPS Archive: Calhoun*



Calhoun is the Naval Postgraduate School's public access digital repository for research materials and institutional publications created by the NPS community. Calhoun is named for Professor of Mathematics Guy K. Calhoun, NPS's first appointed -- and published -- scholarly author.

**Dudley Knox Library / Naval Postgraduate School**  
**411 Dyer Road / 1 University Circle**  
**Monterey, California USA 93943**

<http://www.nps.edu/library>

# **Near-Surface Atmosphere and Surface Wave Influences on Rf/EO Propagation Over the Sea**

Kenneth L. Davidson  
Department of Meteorology, Code MR  
589 Dyer Road, Room 254  
Naval Postgraduate School  
Monterey, CA 93943-5114  
Phone: (831) 656-2309 fax: (831) 656-3061 email: [Davidson@nps.navy.mil](mailto:Davidson@nps.navy.mil)

Document Numbers : N0001400WR20320, N0001401WR20357  
<http://www.met.nps.navy.mil/~jonesk/blsg.html>

## **LONG-TERM GOALS**

Modeling and measurement methods for estimation of over water near-surface atmospheric properties that affect Rf/EO propagation and that are important to weapon system performance.

## **OBJECTIVES**

Overall objective is to improve the turbulent structure and profile descriptions fundamental in near-surface Rf/EO propagation models. Objectives are to:

Obtain near-direct measures of atmospheric properties affecting observed propagation.

Determine how well present dimensionless MO functions describe scalar profiles and turbulent intensities and propagation outcomes over all ranges of stability.

Establish surface waves effects on near-surface scalar profiles and to determine how to relate these to wave age, wave height, wavelength, and directional wave spectra.

## **APPROACH**

Perform field collection and analyses/interpretation of near-surface atmospheric properties and surface waves to relate their impact on near-horizon Rf/EO propagation over the ocean. Field collection with instrumented buoy of mean and fluctuation airflow and surface properties occurs at the Rf/EO mid-path locations. Joint analyses/interpretations are on near-surface refractive gradients, turbulence, and surface wave data obtained with RF/EO propagation. The Rf and EO data collection and analyses/interpretation are related to flux-profile relationships. Propagation phenomena (scintillation, refraction and loss) are related to mean and turbulent air flow and 2-dimensional surface waves. Analyses/interpretations are designed for existing bulk model improvements to account for the wave influence within existing empirical scaling (Monin-Obukhov). There is some guidance from recent numerical modeling.

# Report Documentation Page

Form Approved  
OMB No. 0704-0188

Public reporting burden for the collection of information is estimated to average 1 hour per response, including the time for reviewing instructions, searching existing data sources, gathering and maintaining the data needed, and completing and reviewing the collection of information. Send comments regarding this burden estimate or any other aspect of this collection of information, including suggestions for reducing this burden, to Washington Headquarters Services, Directorate for Information Operations and Reports, 1215 Jefferson Davis Highway, Suite 1204, Arlington VA 22202-4302. Respondents should be aware that notwithstanding any other provision of law, no person shall be subject to a penalty for failing to comply with a collection of information if it does not display a currently valid OMB control number.

1. REPORT DATE <b>30 SEP 2001</b>		2. REPORT TYPE		3. DATES COVERED <b>00-00-2001 to 00-00-2001</b>	
4. TITLE AND SUBTITLE <b>Near-Surface Atmosphere and Surface Wave Influences on Rf/EO Propagation Over the Sea</b>				5a. CONTRACT NUMBER	
				5b. GRANT NUMBER	
				5c. PROGRAM ELEMENT NUMBER	
6. AUTHOR(S)				5d. PROJECT NUMBER	
				5e. TASK NUMBER	
				5f. WORK UNIT NUMBER	
7. PERFORMING ORGANIZATION NAME(S) AND ADDRESS(ES) <b>Department of Meteorology, Code MR,,589 Dyer Road, Room 254,Naval Postgraduate School,,Monterey,,CA, 93943</b>				8. PERFORMING ORGANIZATION REPORT NUMBER	
9. SPONSORING/MONITORING AGENCY NAME(S) AND ADDRESS(ES)				10. SPONSOR/MONITOR'S ACRONYM(S)	
				11. SPONSOR/MONITOR'S REPORT NUMBER(S)	
12. DISTRIBUTION/AVAILABILITY STATEMENT <b>Approved for public release; distribution unlimited</b>					
13. SUPPLEMENTARY NOTES					
14. ABSTRACT <b>Modeling and measurement methods for estimation of over water near-surface atmospheric properties that affect Rf/EO propagation and that are important to weapon system performance.</b>					
15. SUBJECT TERMS					
16. SECURITY CLASSIFICATION OF:			17. LIMITATION OF ABSTRACT	18. NUMBER OF PAGES	19a. NAME OF RESPONSIBLE PERSON
a. REPORT <b>unclassified</b>	b. ABSTRACT <b>unclassified</b>	c. THIS PAGE <b>unclassified</b>			

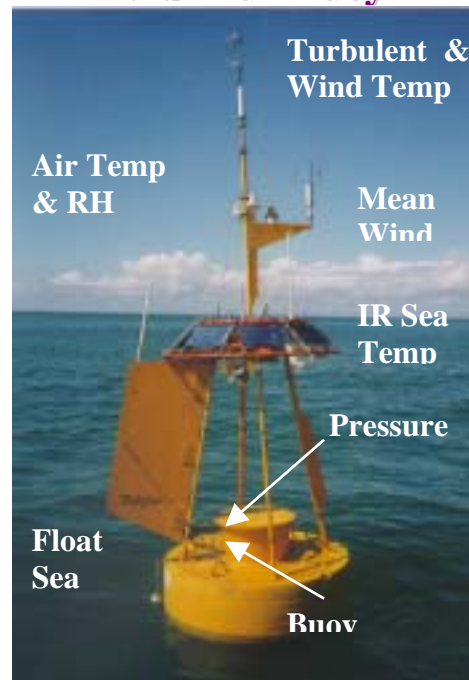
## WORK COMPLETED

Work was completed in FY01 with regard to both analyses and field collection. **Analyses and interpretation** of existing data were made on identification and describing differences between observed and bulk predicted atmospheric effects in the current as well as previous years. Collaborative analyses/interpretations of mean airflow properties matched collaborating PIs objectives to evaluate existing propagation models, e.g. IRBLEM. Separate interpretations addressed the use of current bulk methods for estimating optical turbulence ( $C_n^2$ ) and scaling parameters ( $T^*$ ,  $q^*$ , and  $u^*$ ). Waves influences were qualitatively identified. More quantitative information on wave influence and on the profiles themselves is being obtained. Flux buoy data obtained off Duck, NC, and Wallops, VA, were examined with regard to fetch-related differences in the bulk transfer coefficients on-shore/off-shore and wind-wave angle difference dependence of the drag coefficient, in addition to turbulent intensity comparisons. **Instrumented Flux-buoy field collections** were made during the Roughness and Evaporation Duct (RED) experiment at the mid-point of the EO path. Continuous collection occurred from 24 August to 16 September, 2001, with recovery on 18 September. Mean airflow values and status of fast sampled (turbulence and waves) values were received at a shoreline receiver. All systems operated except one component of the buoy motion measurement system failed partway through the collection.

### NPS 'Flux' Buoy RED Measurements

Parameter Measured	Existing
Mean Meteorology	X
Temperature Profile	X
Humidity Profile	X
Momentum Flux	X
Buoyancy Flux	X
SST	X
1 & 2-D Wave Spectra	X

### NPS Flux Buoy



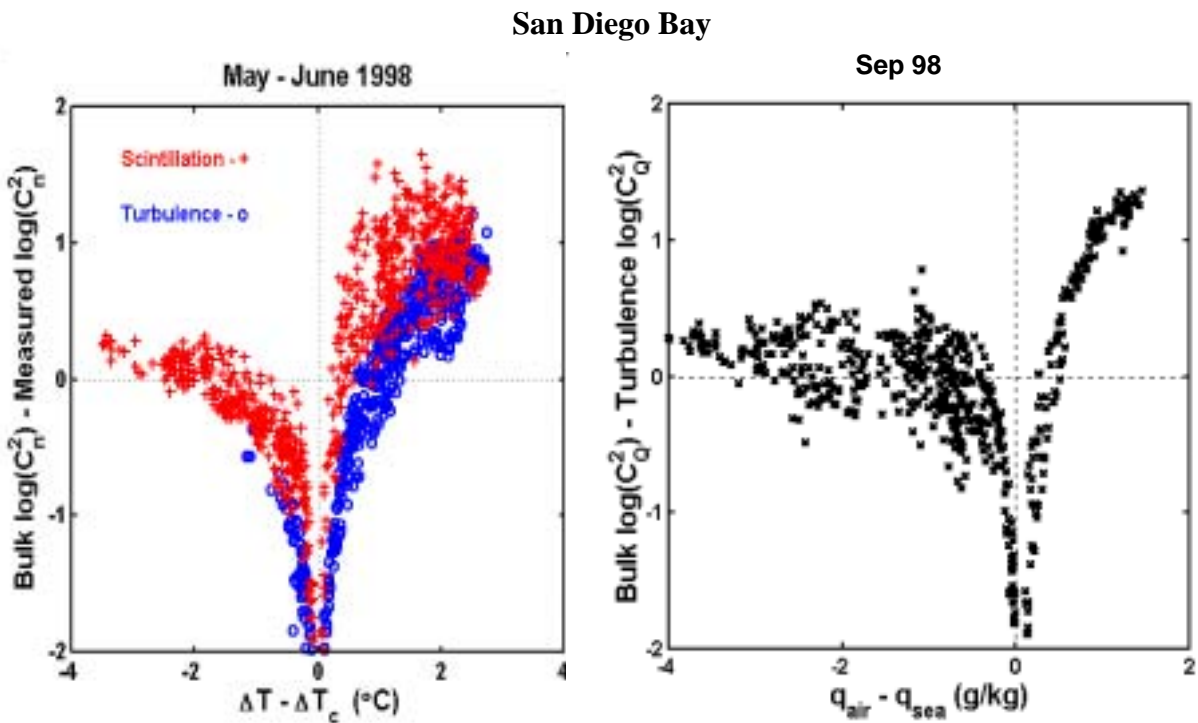
## RESULTS

Results show that current models for turbulent intensity perform well in unstable conditions but clearly not in stable conditions, Frederickson et al 2000. Further San Diego turbulence and scintillation values agree. Stable ( $T_{\text{air}} - T_{\text{sea}} > 0$ ) condition errors could be due to the effects of surface waves on near surface profiles, or off-shore advection in a coastal region. Results for stable ( $T_{\text{air}} - T_{\text{sea}} > 0$ ) conditions

in San Diego Bay (San Diego'98), Figure 1, indicate bulk values overestimate (both  $C_T^2$  and  $C_q^2$ ) and off the east coast (Duck'99 and Wallops'00), Figure 2, the bulk values underestimate ( $C_T^2$ ) observed turbulent values.

Wave influence's role is evident because the primary difference between the San Diego Bay and East Coast sites that the San Diego Bay is a more swell-dominated regime. Descriptions of the wave influence seem to have become a necessity if near-surface optical turbulence is to be described. Because of the flux-profile relationships, we can assume that existing scaling also does not describe profiles properly over waves, in stable conditions.

Flux buoy data obtained off Duck, NC, and Wallops, VA, have been those most recently examined to determine wave influence on the adjacent airflow. Examinations were made on fetch-related differences in the bulk transfer coefficients on-shore/off-shore and wind-wave angle difference dependence of the drag coefficient.



*Figure 1*

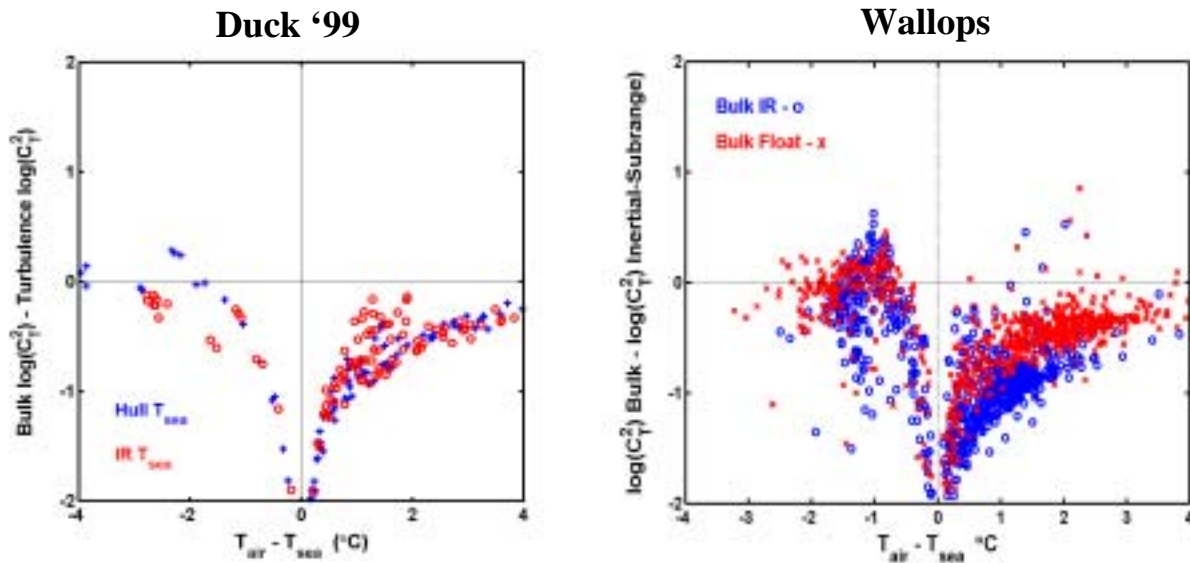


Figure 2

**IMPACT/APPLICATIONS:**

Understandings achieved from this effort will improve scalar flux-scaling relationships over waves and will enhance ability to use remote sensing of sea-surface temperature and waves in estimating near-surface Rf/EO propagation conditions.

**TRANSITIONS**

The results are being used to modify/direct application of models and measurements within operational tactical decision aids, e.g. AREPS.

**RELATED PROJECTS**

Related projects are the SPAWAR PMW-155's 6.4 programs supporting acquisition of shipboard METOC sensors and 6.2-6.4 R&D programs supporting development and validation of METOC models for Rf/EO affecting properties.

**SUMMARY**

Weapon system performance prediction requires bulk models based on operational type data. Over water, near-surface airflow properties (profiles and turbulence) affecting Rf and EO propagation are inadequately described by bulk models because of unaccounted for wave influences. Results from future work could reduce errors in observed optical turbulence values that are 10 times higher to 50% lower, depending on wind-wave conditions. There will be similar reduction in errors in estimating profile gradient which are known to be large when water is cooler than air.

## REFERENCES

Frederickson, P. A., K. L. Davidson, C. R. Zeisse, and C. S. Bendall, "Estimating the Refractive Index Structure Parameter ( $C_n^2$ ) Over the Ocean Using Bulk Methods," *Journal of Applied Meteorology*, vol. 39, p. 1770-1783, October 2000.

## PUBLICATIONS

Frederickson, P. A., K. L. Davidson, C. R. Zeisse, and C. S. Bendall, "Estimating the Refractive Index Structure Parameter ( $C_n^2$ ) Over the Ocean Using Bulk Methods," *Journal of Applied Meteorology*, vol. 39, p. 1770-1783, October 2000.

Jensen, D. S. G. Gathman, C. R. Zeisse, C. P. McGrath, G. de Leeuw, M. H. Smith, P. A. Frederickson, and K. L. Davidson, 2000, "Electrooptical Propagation Assessment in Coastal Environments (EOPACE): Overview and Initial Accomplishments," *Optical Engineering, In Press*.

Zeisse, C. R., A. E. Barrios, G. de Leeuw, P. A. Frederickson, and K. L. Davidson, 2000, "Low Altitude Infrared Propagation over the Ocean," *Applied Optics, In Press*.

Mahrt, L., D. Vickers, J. Sun, T. Crawford, J. Crescenti, and P. Frederickson, 2001: Surface Stress in Offshore Flow and Quasi-Frictional Decoupling. *Journal of Geophysical Research, In Press*.

Paul A. Frederickson and K. L. Davidson, 2001, "Observational Buoy Studies of Air-Sea fluxes," Proceedings, WCRP/SCOR Workshop on Intercomparison and Validation of Ocean-Atmosphere Flux Fields, Bolger Center, Washington DC, 21-24 May, 2001

Frederickson, P. A., K. L. Davidson, Janet Stapleton, Dorothea Shanklin, Russell Wiss, Tuan Nguyen, Edward Burgess III, Carl Weeks, William Thornton, and Tim Brown, 2001, "Validation of AREPS Propagation Assessment Using Different Evaporation Duct Models," Proceedings, Battlespace Atmospheric and Cloud Impacts on Military Operations (BACIMO) Conference, Fort Collins, CO, July 10-12, 2001