



**Calhoun: The NPS Institutional Archive**  
**DSpace Repository**

---

Faculty and Researchers

Faculty and Researchers' Publications

---

2004-03

## Installing Cortona Browser as a PowerPoint Control

Brutzman, Don; Blais, Curtis

---

<http://hdl.handle.net/10945/59777>

---

This publication is a work of the U.S. Government as defined in Title 17, United States Code, Section 101. Copyright protection is not available for this work in the United States.

*Downloaded from NPS Archive: Calhoun*



Calhoun is the Naval Postgraduate School's public access digital repository for research materials and institutional publications created by the NPS community. Calhoun is named for Professor of Mathematics Guy K. Calhoun, NPS's first appointed -- and published -- scholarly author.

**Dudley Knox Library / Naval Postgraduate School**  
**411 Dyer Road / 1 University Circle**  
**Monterey, California USA 93943**

<http://www.nps.edu/library>

# Installing Cortona Browser as a PowerPoint Control

Don Brutzman and Curtis Blais  
Naval Postgraduate School (NPS)  
Monterey California USA

[brutzman@nps.navy.mil](mailto:brutzman@nps.navy.mil)

[clblais@nps.navy.mil](mailto:clblais@nps.navy.mil)

# Overview

- These slides shows how to install the *Cortona* 3D browser in Powerpoint
- Tested versions:
  - Cortona 3.0 July 2001
    - Windows 2000 with Office 2000 SR-1
  - Cortona 4.0 June 2002
    - Windows XP with Office XP

# Limitations 1

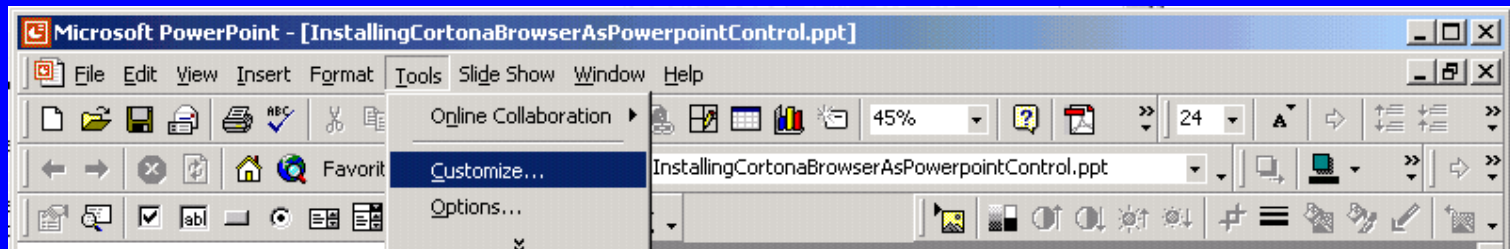
- One primary goal is to get DIS-Java-VRML scripting running inside PowerPoint.
- Warning: the Cortona browser does not yet support DIS-Java-VRML networking. To date, CosmoPlayer under Netscape 4.77 supports DJV.
- However Cortona alone supports the current Powerpoint controls, so it is a useful example.
- Tested using Office 2000 on various Windows versions by several NPS students plus the programming staff of Rolands & Associates.

# Installation: steps 1, 2

1. Install Cortona browser under Internet Explorer from the ParallelGraphics website at <http://www.ParallelGraphics.com>
2. Open a new or existing presentation in PowerPoint.

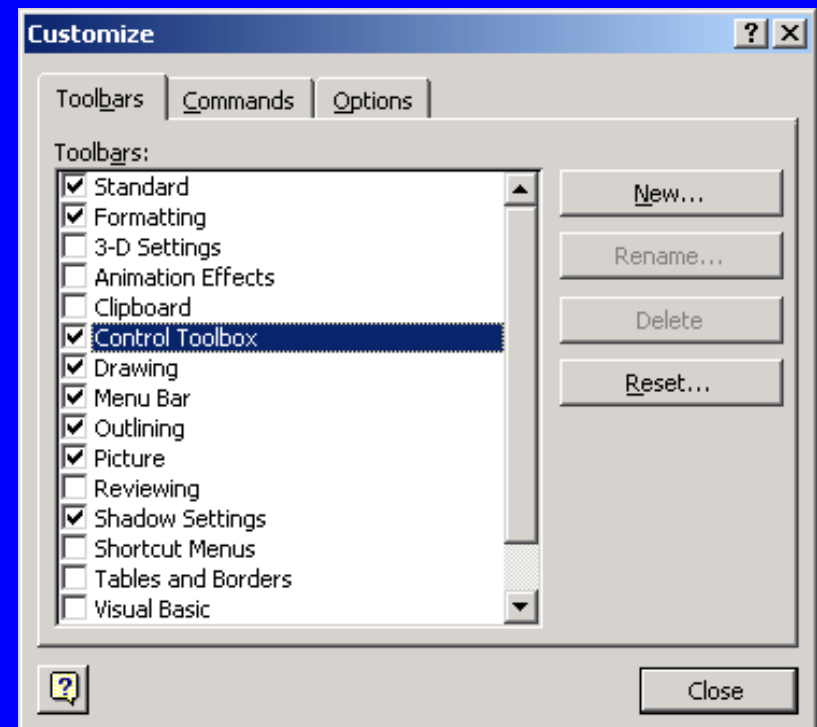
# Installation: step 3

3. From the main menu bar, select Tools, Customize.



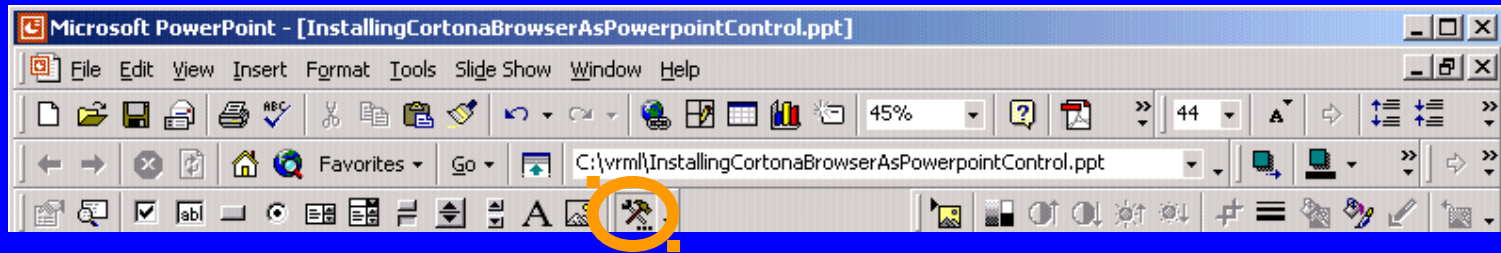
# Installation: step 4

4. In the Toolbars tab  
tab  
select Control  
Toolbox,  
if you don't  
already have it in  
your toolbar.



# Installation: step 5

5. Select the More Controls icon (hammer and wrench icon) from the Control Toolbox toolbar. Select the ParallelGraphics Cortona Control and place the control onto a blank Powerpoint slide.





Microsoft PowerPoint - [InstallingCortonaBrowserAsPowerpointControl.ppt]

File Edit View Insert Format Tools Slide Show Window Help

55% 24

C:\Documents and Settings\brutzman.NPGS.000\Desktop\Installin

1 **Installing Cortona Browser as a PowerPoint Control**

Don Brutzman and Curtis Blais  
Naval Postgraduate School (NPS)  
Monterey California 93943-5000 USA  
[brutzman@nps.navy.mil](mailto:brutzman@nps.navy.mil)  
[clblais@nps.navy.mil](mailto:clblais@nps.navy.mil)

22 May 2001

2 **Overview**

- If Powerpoint is set up for VRML browsing, the gimbals scene on the last slide of this presentation will display in a live 3D browser.
- Powerpoint setup instructions follow.
- Note that we used a screen snapshot under the 3D control, so that a picture of the scene is visible. Images of interest need to be visible, even while editing in Powerpoint or if viewing in Powerpoint while Cortona is not installed.

3 **Limitations**

- Warning: the Cortona browser does not yet support DIS-Java-VRML networking. To date, CosmoPlayer under Netscape 4.77 supports DJV.
- However Cortona alone supports the

**More Controls**

## Installation, continued

4. Select the More Controls icon (hammer and wrench icon) from the Control Toolbox toolbar. Select the ParallelGraphics Cortona Control and place the control onto a blank Powerpoint slide.
5. Right click on that control on the slide, and select Properties. Go to the Scene parameter in the properties window and enter the name of the VRML scene to be rendered.

Click to add notes

Slide 5 of 7 Default Design

Microsoft PowerPoint - [InstallingCortonaBrowserAsPowerpointControl.ppt]

File Edit View Insert Format Tools Slide Show Window Help

55% 24

C:\Documents and Settings\brutzman.NPGS.Uob\Desktop\Installin

Windows versions by several NPS students plus the programming staff of [Rolands & Associates](#).

4 **Installation: 6 steps**

1. Install Cortona browser under Internet Explorer from the [ParallelGraphics](#) website at <http://www.parallelgraphics.com>
2. Open a new or existing presentation in PowerPoint.
3. From the main menu bar, select Tools, Customize. In the Toolbars tab, select Control Toolbox, if you don't already have it in your toolbar.

5 **Installation, continued**

4. Select the More Controls icon (hammer and wrench icon) from the Control Toolbox toolbar. Select the [ParallelGraphics Cortona Control](#) and place the control onto a blank Powerpoint slide.
5. Right click on that control on the slide, and select Properties. Go to the Scene parameter in the properties window and enter the name of the VRML scene to be rendered.

NumberBvr Class  
OleInstall Class  
Outline Control  
Outlook DocSite OLE Control  
Outlook Express Mime Editor  
Outlook Header OLE Control  
Outlook Recipient Collection Edit OLE Control  
**ParallelGraphics Cortona Control**  
PathBvr Class  
PDFFile Control  
Preview Class  
Prt5um Class

216 controls

continued

con (hammer and wrench icon) from the Control Toolbox toolbar.

Select the [ParallelGraphics Cortona Control](#) and place the control onto a blank Powerpoint slide.

5. Right click on that control on the slide, and select Properties. Go to the Scene parameter in the properties window and enter the name of the VRML scene to be rendered.

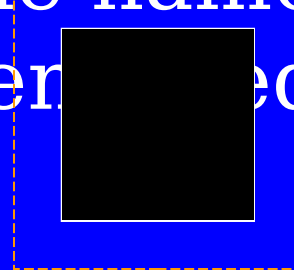
Click to add notes

Draw AutoShapes

Click and drag to insert a control.

# Installation: step 6

6. While in edit mode, right click on that control on the slide, then select Properties. Go to the Scene parameter in the properties window and enter the name of the VRML scene to be rendered.

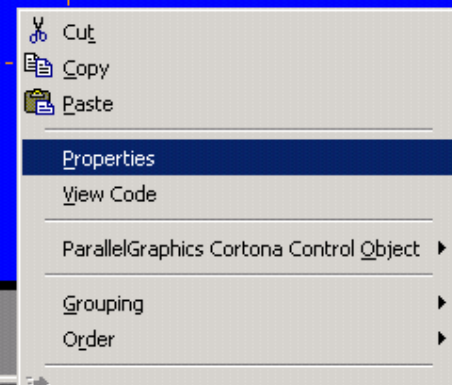
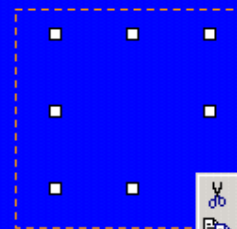


Dragged control is here:

## Installation: step 6

6. While in edit mode, right click on that control on the slide, then select Properties. Go to the Scene parameter in the properties window and enter the name of the VRML scene to be rendered.

Dragged control is here:



Microsoft PowerPoint - [InstallingCortonaBrowserAsPowerpointControl.ppt]

File Edit View Insert Format Tools Slide Show Window Help

55%

C:\Documents and Settings\brutzman.NPGS.000\Desktop\Installin...

browsing, the gimbals scene on the last slide of this presentation display in a live 3D browser.

- Powerpoint setup instructions
- Note that we used a Cortona browser under the 3D control, of the scene is visible. Interest need to be visible editing in Powerpoint while Cortona Powerpoint while Cortona installed.

### 3 Limitations

- Warning: the Cortona browser not yet support DIS-J networking. To date Cortona runs under Netscape 4.77
- However Cortona alone supports the current Powerpoint controls, so it is a useful example.
- Tested using Office 2000 on various Windows versions by several NPS students plus the programming staff of Rolands & Associates.

### 4 Installation: 6 steps

1. Install Cortona browser under Internet Explorer from the ParallelGraphics website at <http://www.parallelgraphics.com>

Click to add notes

Slide 5 of 10

Default Design

**Properties**

Cortona1 Cortona

Alphabetic | Categorized

ReadyState	4
RendererHints	1024
RendererName	OpenGL Renderer
RendererOptimization	1 - Intel Pentium III and higher
Scene	<a href="http://www.web3d.org/TaskGroups/x3d/translation/examples/course/Gimbals.wrl">http://www.web3d.org/TaskGroups/x3d/translation/examples/course/Gimbals.wrl</a>
show_hidden_viewpoints	False
ShowFps	False
ShowLogo	True
ShowProgress	True
showRenderingTime	False

5. Right click on that control on the slide, and select Properties. Go to the Scene parameter in the properties window and enter the name of the VRML scene to be rendered.

# Almost done: installation test

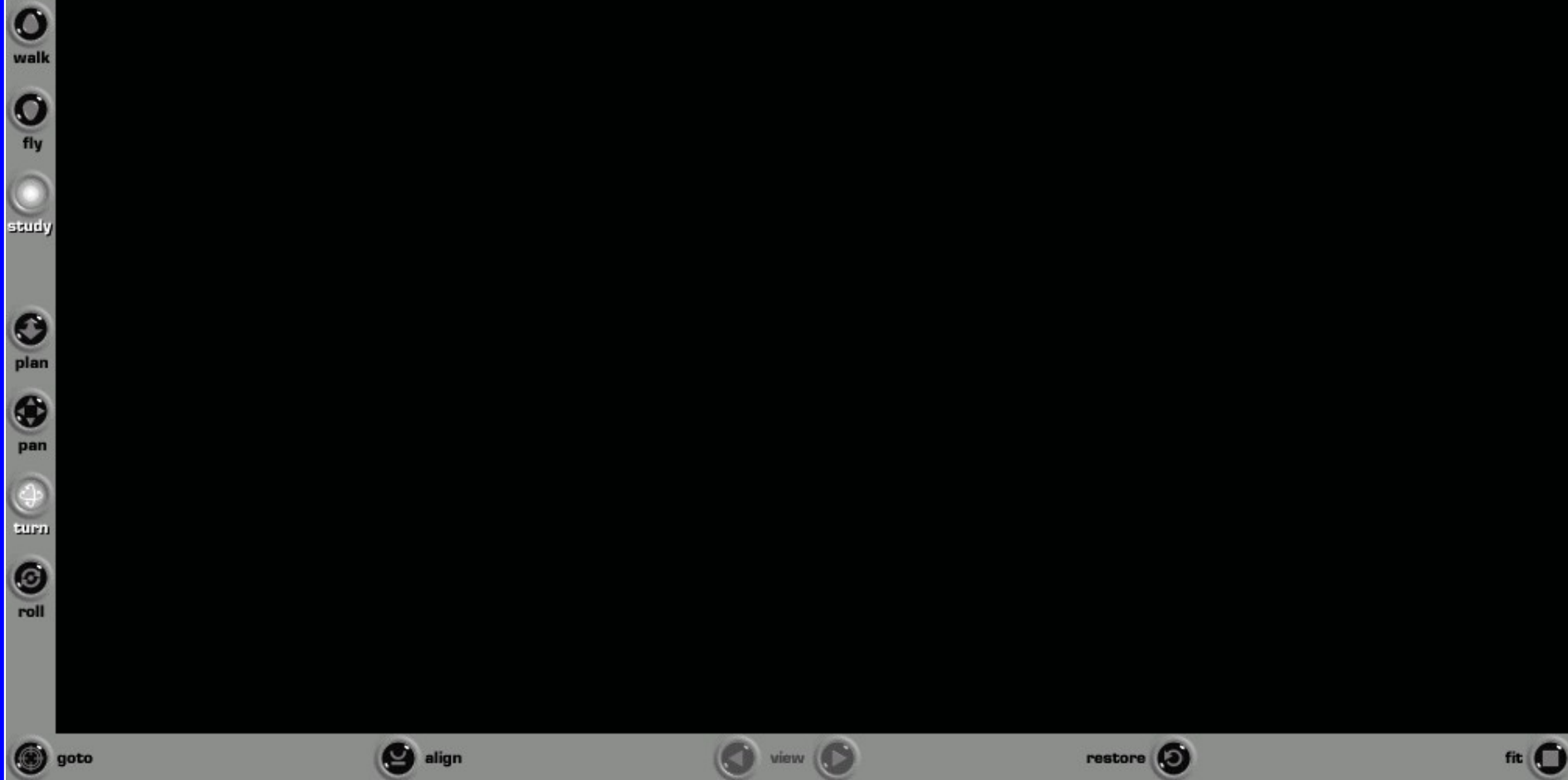
7. Go into slide show mode. The image on next page should be a live Cortona window on the slide. Navigate or rotate the 3D gimbals to test.

The following page has a default 2D example image under the 3D test scene of movable gimbals.

<http://www.web3D.org/TaskGroups/x3d/translation/examples/cours>

# *online* X3D/VRML example: gimbals

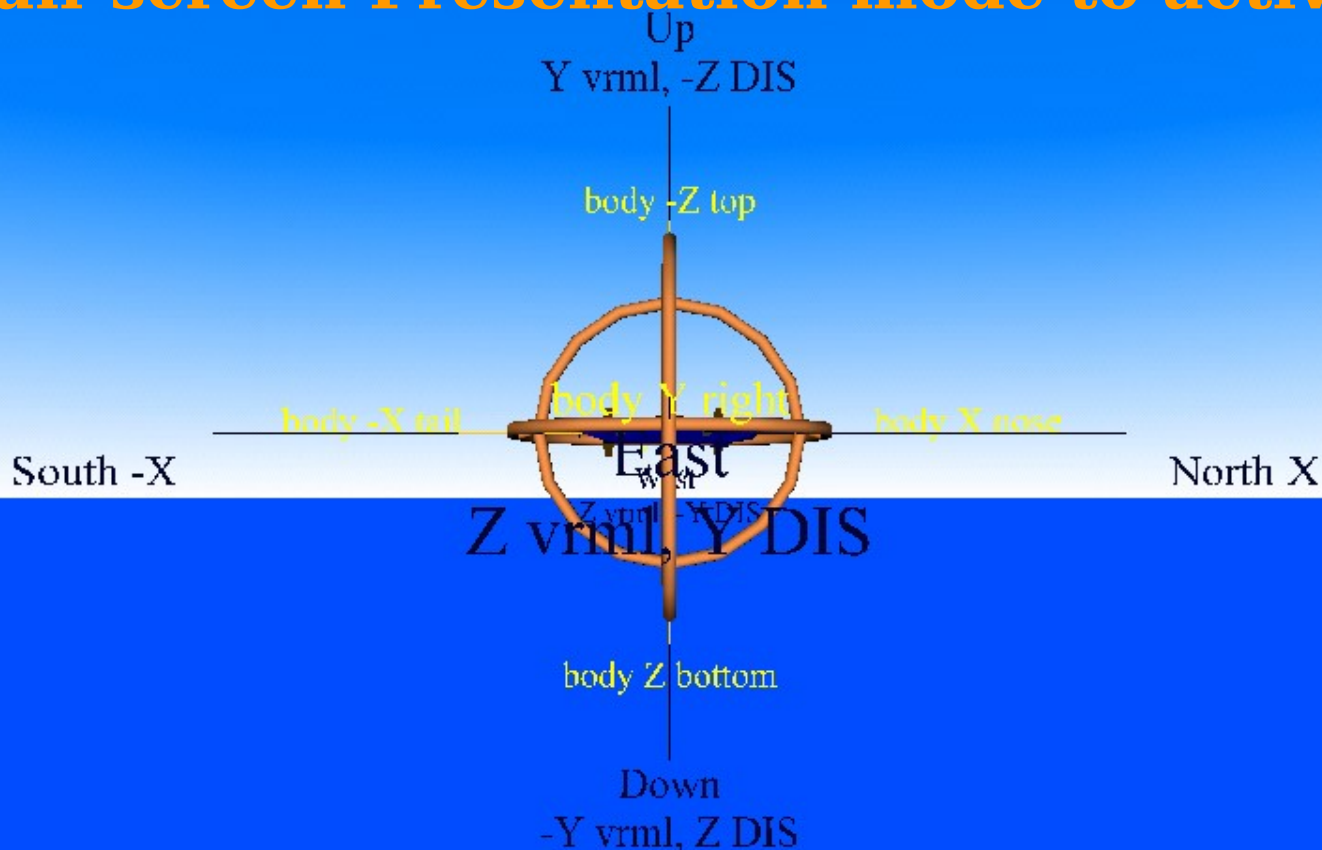
[go to full-screen Presentation mode to activate]



[PgUp/PgDn to change viewpoints, arrow keys or mouse for manipulation]

# *local* X3D/VRML example: gimbals

[go to full-screen Presentation mode to activate]



Text string for rotation values

[PgUp/PgDn to change viewpoints, arrow keys or mouse]



# Contact

Questions, comments and  
improvements are welcome.

Don Brutzman and Curtis Blais  
Naval Postgraduate School (NPS)  
Monterey California USA

[brutzman@nps.navy.mil](mailto:brutzman@nps.navy.mil) [clblais@nps.navy.mil](mailto:clblais@nps.navy.mil)

<http://www.web3d.org/x3d/translation/examples/help.htm>

**l#PowerPoint**