



**Calhoun: The NPS Institutional Archive**  
**DSpace Repository**

---

NPS Scholarship

Publications

---

2021

## Quantifying, Visualizing, and Tracking Capability Gaps

Kamel, Magdi N.; Gallup, Shelley P.

Monterey, California: Naval Postgraduate School

---

<https://hdl.handle.net/10945/69884>

---

This publication is a work of the U.S. Government as defined in Title 17, United States Code, Section 101. Copyright protection is not available for this work in the United States.

*Downloaded from NPS Archive: Calhoun*



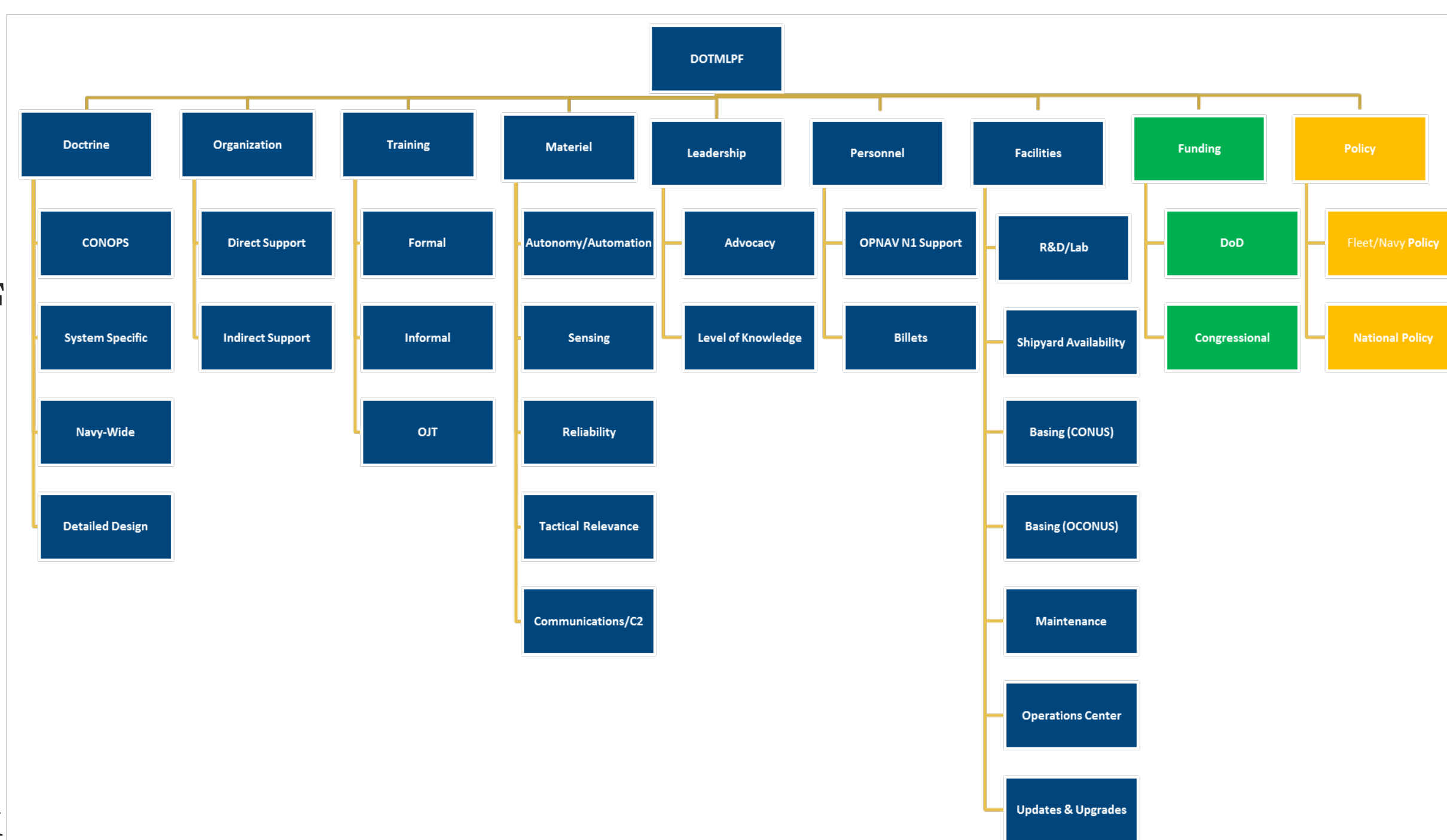
Calhoun is the Naval Postgraduate School's public access digital repository for research materials and institutional publications created by the NPS community. Calhoun is named for Professor of Mathematics Guy K. Calhoun, NPS's first appointed -- and published -- scholarly author.

**Dudley Knox Library / Naval Postgraduate School**  
**411 Dyer Road / 1 University Circle**  
**Monterey, California USA 93943**

<http://www.nps.edu/library>

## Research Objectives

- Develop a hierarchical framework of factors for evaluating capability gaps based on DOD DOTMLPF framework
- Develop a methodology for calculating and visualizing a capability gap score at any given point in time to depict capability gap resolution progress
- Develop a dashboard to provide decision makers with an at-a-glance view of the status of each capability across time and elements of the framework



Expanded DOTMLPF Framework

$$A_i^{WASM-score} = \sum_{j=1}^n w_j a_{ij}$$

Weighted Sum Model

$$A_i^{WPM-score} = \prod_{j=1}^n x_{ij}^{w_j}$$

Weighted Product Model

$$A_i^{WASPAS-score} = \lambda A_i^{WASM-score} + (1 - \lambda) A_i^{WPM-score}$$

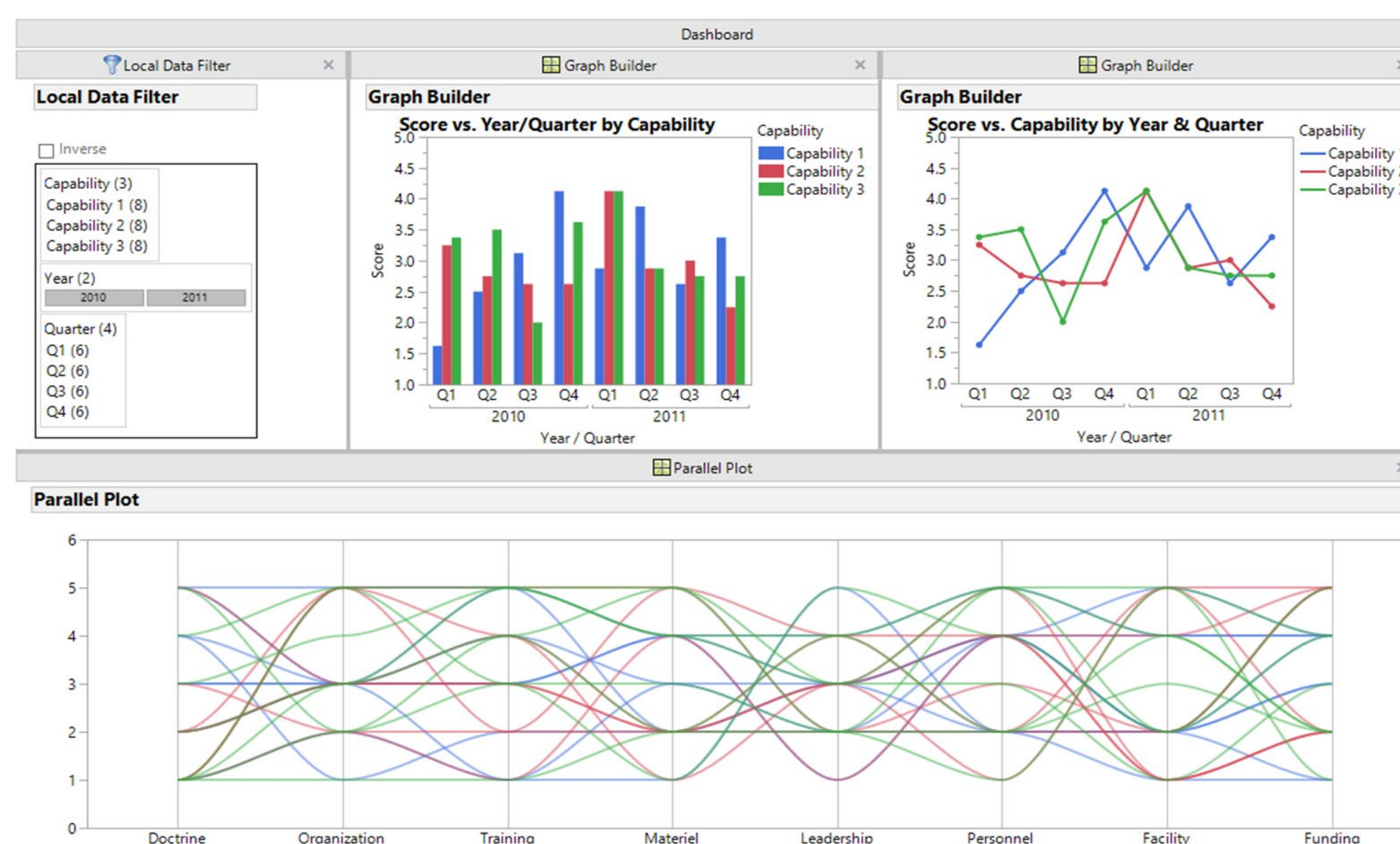
Weighted Aggregated Sum Product Assessment (WASPAS)

## Proposed Methodology

- Identify factors that determine a capability gap
- Rate capabilities on identified factors
- Assign weights to identified factors
- Calculate a capability gap score using an appropriate model
- Conduct a sensitivity analysis
- Visualize capability score gap across time and factors

## Data Visualization

- An IPCL dashboard provides at-a-glance view of capability gap scores by capability, year, quarter and factor
- Allows decision maker to monitor the progress of closing capability gaps by acting as a “progress report”



IPCL visualization dashboard

## Expected Outcomes and Benefits

- Support prioritization of capabilities based on hard data
- Provide a clear and concise picture of progress being made, or not made, to close identified gaps and/or provide a capability
- Support the creation of a central repository for organizations to distribute pertinent information



**Researchers:** Prof. Magdi Kamel and Dr. Shelley Gallup  
Graduate School of Operational and Information Sciences  
**Topic Sponsor:** Navy Warfare Development Command (NWDC)

NRP Project ID:  
NPS-21-N213-A